



شركة بمكو العربية للمقاولات
ARABIAN BEMCO CONTRACTING CO.

INDUSTRIAL & POWER PROJECTS
DEVELOPERS & CONTRACTORS

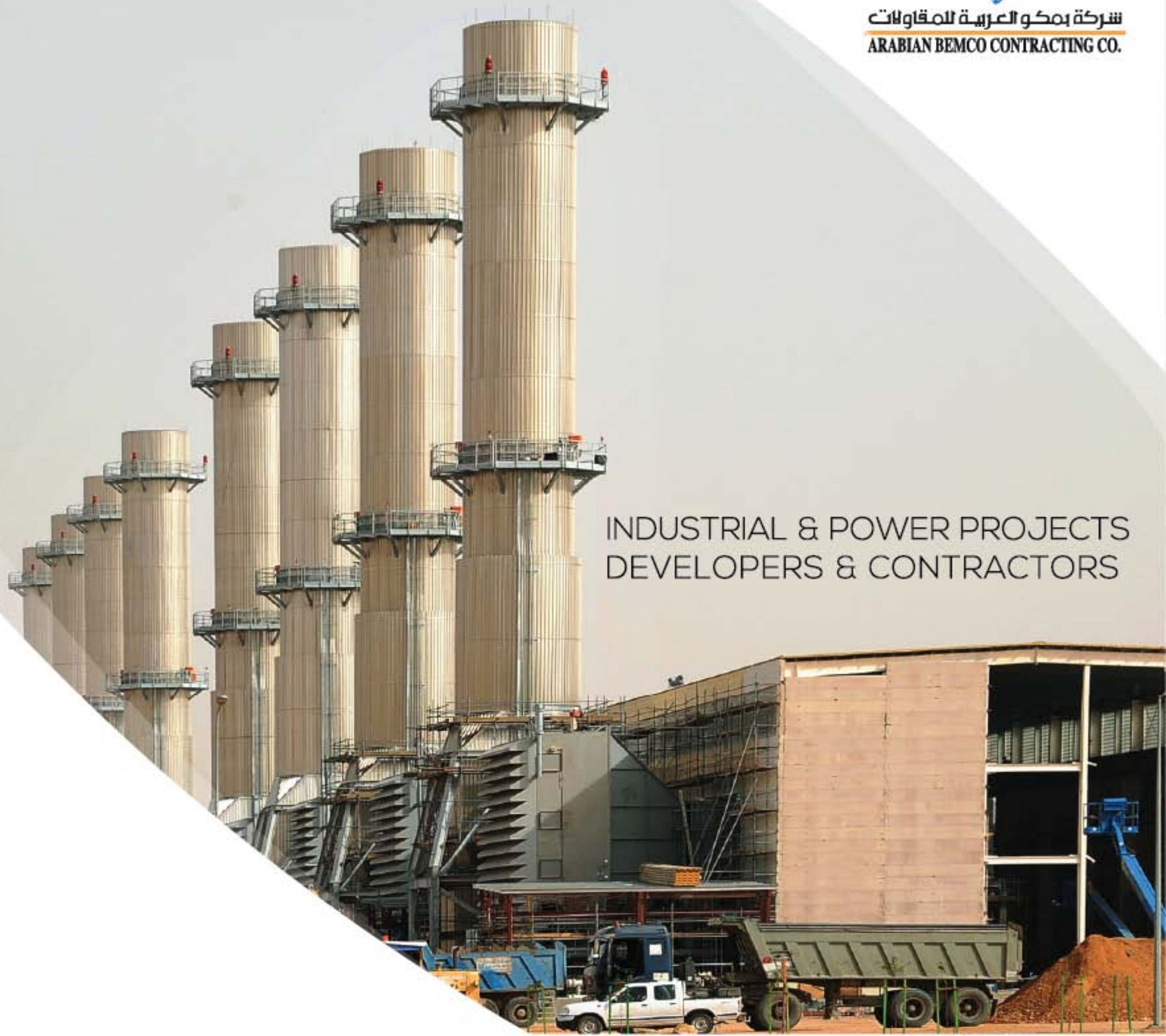
COMPANY HEADQUARTER

Arabian Bemco Contracting Ltd.
Elite Commercial Center
Pr. Mohamad Bin Abdulaziz St., Al-Rawdah Dist.
PO.Box 3143, Jeddah 2147, Saudi Arabia
T +966 2 6695851
F +966 2 6604875
E arabian@bemco-ipp.com

BEIRUT REGIONAL OFFICE

Bemco International Offshore
PO.Box 17-5323 Beirut, Lebanon
T +961-1-561551
F +961-1-561660
E mail@bemco-int.com

www.arabianbemco.com





CEO Message	2/3
Commitment to quality	4
Overall Company Structure & Organization	5
Company activities & services	6/9
Company Affiliates	10/11
PROJECTS	
- Power	12/15
- Industrial Oil & Gas	16/17
- Industrial Refrigeration	18/19
- Industrial Water	20/21
- Electro Mechanical	22/23
- Civil	24/25
Project Development & Financing	26/27
Company Capabilities	28-34
Partial list of executed projects	35
Partial list of partners	36



Henry M. Sarkissian CEO

Arabian Bemco, a leading Power, Industrial and Infrastructure EPC Turnkey Contractor in the Middle East, was established in 1964. This Company which began as an Electro- Mechanical Contractor is now a regional specialized EPC powerhouse undertaking billion dollars' worth of projects on extremely rush basis to meet the needs of its clients. To this date, Arabian Bemco has installed over 24,000 MW in power capacity, over 10,000 MVA of transmission and distribution stations, over 400,000 Tons of refrigeration and more than 400,000 m³/ day of treatment plants and pumping stations throughout the Middle East.

Through its experience, Arabian Bemco has developed a strong knowhow and specialized expertise in the Engineering, Procurement, Construction and Start-Up and Commissioning of Power, Water, Oil & Gas, Petrochemical and Infrastructure projects. Arabian Bemco's entrepreneurial leadership has restructured the company in specialized Business Units and centralized Project Management, enabling enhanced communication, efficient management and flexibility to expand regionally and globally by focusing on client satisfaction, quality and timely completions of projects. In addition, Corporate and Project management have been upgraded to reflect the goals of Arabian Bemco, the most competitive, best performing highest quality company.

Alongside the growth and experience, Arabian Bemco built a strong team of professionals and resources. Currently Arabian Bemco directly employs over 18,000 individuals and owns an extensive fleet of construction equipment to support its projects. In addition, as part of Arabian Bemco's goal to be the most competitive, best performing and highest quality company, Arabian Bemco has invested heavily to develop specialized fabrication and manufacturing facilities that provides specific products to its customers.

Arabian Bemco is currently developing along with the currently established manufacturing facilities an additional one million sq. meter industrial city which will include manufacturing facilities for steel fabrication, spooling and pipe fabrication, LV/ MV switchgears and low current equipment, HRSG and steam components and products. These affiliates research, develop, engineer and manufacture advanced products to complement the EPC knowhow of Arabian Bemco and provide a complete solution to its customers that meets their schedule, cost and quality.

Because of the significant success and growth of Arabian Bemco, the Board of Directors recently decided to increase the paid-up capital of the company to cope with Bemco's investments for growth and future expansion plans in the industrial and IPP sectors in the region. The increase in capital is an indication of the faith bestowed on the management.

This confidence in the success of Arabian Bemco has also been confirmed by the local banks, which have provided Arabian Bemco with significant credit facilities.

Over the last 40 years, Arabian Bemco established a strong presence in the region and developed close partnerships with its customers. Today, Arabian Bemco is expanding its prestigious customer database with the growth of its operations in Iraq, the CIS countries and the African continent.

Arabian Bemco continues to enhance its capabilities to meet the challenges of the 21st Century.

Sincerely,
Henry M. Sarkissian



Arabian BEMCO Headquarters KSA

Arabian Bemco looks forward to the challenges and opportunities ahead.



Current Markets
Middle East: KSA, UAE, Qatar, Bahrain, Yemen
Europe: France
USA: Chicago

Emerging Markets
Middle East: Iraq
CIS Countries: Kazakhstan
Africa: North Africa, South Africa
Asia: China, South Korea

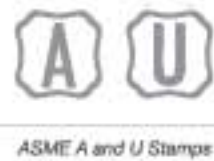
Quality is a Priority in Arabian Bemco's culture. Strict Quality Control Procedures related to Management, Engineering, Procurement, Selection of Vendors/Subcontractors and Execution on the construction site are designed and enforced to ensure the highest grade of excellence. Such meticulous procedures for quality result in client satisfaction, continuous business, and mitigation of risk.

Arabian Bemco scrutinizes down to the minor details its work to enhance not only the performance of the complete system it installs, but also to ensure that its finished work is aesthetically pleasant.

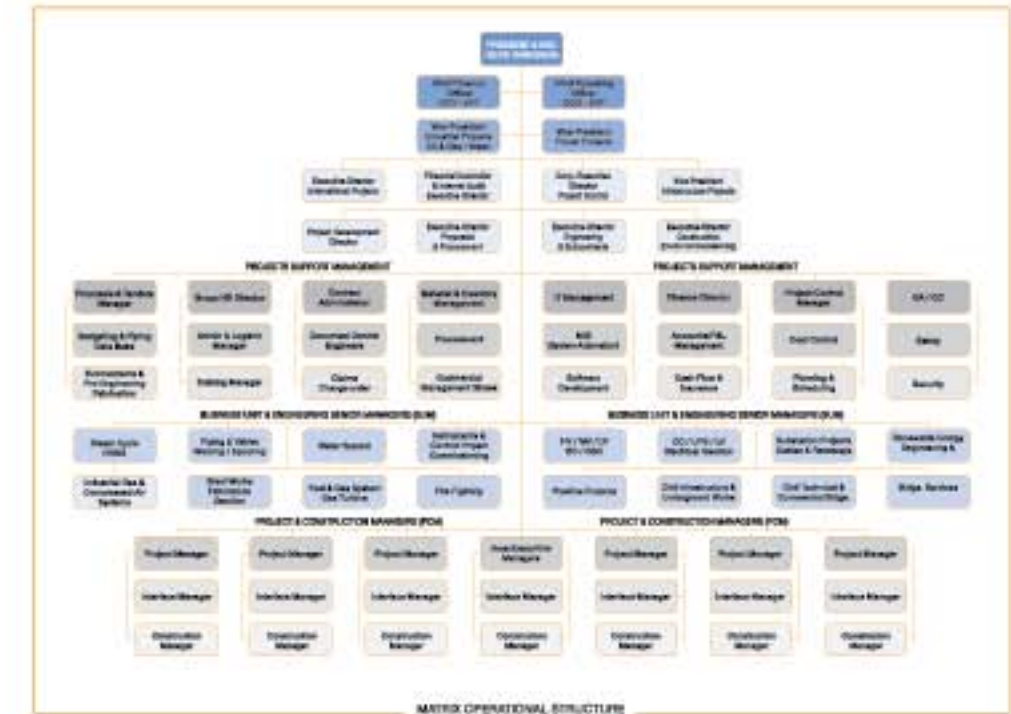
Arabian Bemco is a pioneer in obtaining and implementing the ISO 9001 Certification for Engineering, Design, Management, Procurement and Construction since the mid 90s.

Bemco is also the recipient of the ASME A and U stamps for the manufacturing, erection and assembly of power Boilers and pressure vessels.

The continuous implementation of high quality work contributes to Arabian Bemco's reputation and credentials with all its clients and partners.



Under the leadership of the management, Arabian Bemco has developed specialized departments led by Business Unit Managers (BUMs) who have a vertical responsibility beginning with proposal until start-up and commissioning and final handing over to the client. In addition the introduction of the Project and Construction Managers (PCMs) allows Arabian Bemco to manage and deliver its projects on time with the highest quality. This new structure allows Arabian Bemco to remain one of the leaders in the EPC market and provide the most efficient and turnkey solutions to its clients.



Arabian Bemco is capable of undertaking power, industrial and special systems on turnkey projects basis in the Kingdom of Saudi Arabia and all over the Middle East & North Africa.

Arabian Bemco's main activities include the following:



POWER PROJECTS

- Conventional Steam Power Plants
- Combined Cycle Power Plants
- Simple Cycle Combustion Turbine Power Plants
- Diesel Engine Power Plants
- High Voltage Substation (GIS & AIS) ranging from 69 KV to 400 KV
- High Tension Transmission Line
- MV Distribution
- Emergency Systems



INDUSTRIAL PROJECTS

- Refinery & Petrochemical Plants
- Oil & Gas Power Plants
- Pipelines, Pumping & Compressor Stations
- Oil & Gas Product Transfer & Storage
- Water Treatment & Desalination Plants
- Sewage and Wastewater Treatment Plants
- Chillers & Refrigeration Plants
- District Cooling Plants



CIVIL AND INFRASTRUCTURE PROJECTS (EPC CONTRACTS)

- Industrial Civil Works for Power, Industrial, Water, Petrochemical and Oil & Gas Plants
- Turnkey Housing and Commercial Buildings
- Industrial Steel Buildings
- Buildings, Pipe racks and Tanks
- Storm and Drainage System
- Steel Structure
- Civil Infrastructure
- Commercial and Technical Building

In addition, Arabian Bemco established strong know-how in the following systems and equipment:

MECHANICAL

- Steam Systems (boilers, HRSGs, Steam Turbines)
- Gas Turbines
- Cooling Water Systems
- Piping, Valves, Welding/Spooling
- Steel Works, Fabrication & Erection
- Fuel and Water Bulk Storage Tanks
- Water Systems (Raw Water, Pre-treatment, RO, Demin, Service, Potable, Sanitary, Oily Water, Chemical Drain, Electro Chlorination, Chemical Dosing)
- Liquid & Gas Fuel Systems
- Industrial Gas & Compressed Air Systems
- Lube Oil Purification
- Fire Fighting



ELECTRICAL

- HV Switchgears (GIS and AIS)
- Power Transformers
- MV Switchgears
- LV Switchgears
- MCCs and Distribution Panels
- DC and Uninterruptible Power systems (UPS)
- Lighting and small Power Systems
- Protection & Control
- HV Gas Insulated Busducts
- HV, MV & LV Cable Systems



I&C

- DCS
- PLC & Automation
- Instrumentation & Control Valves
- Vibration Monitoring Systems
- Low Current and Security Systems (Telephone, Public Address and CCTV Systems)
- MATV and Satellite systems
- Central Control and Monitoring system



BUILDING SERVICES

- HVAC Systems and Refrigeration
- Building Management system
- Workshop equipment system
- Turbine Inlet Air cooling system (TIAC)
- Plumbing
- Operation & Maintenance



As part of its know-how developed throughout the years, Arabian Bemco pioneered the use of pre-engineered/pre-fabricated systems and units such as mechanical equipment modularization, electrical panels, ducts, piping and spooling. This pre-assembly is done throughout various Bemco workshops and reduced site erection time drastically.

In today's world, Industrial Projects are becoming larger and more complex. Arabian Bemco, through its long experience, has built a strong construction and project management team to meet the constant changes in the market. Arabian Bemco's strong knowledge in these fields allows us to maintain the highest quality standard and execute the projects on schedule and at the estimated cost. Civil works constitute a major portion of these projects. Arabian Bemco Management restructured the civil management team which now provides full in-house engineering, procurement and construction capabilities thus allowing greater control on quality, performance and cost.

To provide the best services to its clients, Arabian Bemco's focus is to utilize its in-house Capabilities, value engineering and value design. As a result we are able to offer our clients the most optimized final product.

In order to achieve its objectives, Arabian Bemco retains over 18000 direct employees, including over 1000 professionals and highly specialized staff that ensure the proper execution of projects starting at the proposal stage until the final handing over. In addition, Arabian Bemco has invested heavily in a large fleet of construction equipment. Arabian Bemco's team is specialized in the latest planning and project management software such as JDE ERP systems and Primavera scheduling and planning (P6) which allows it to monitor daily the progress using various reporting tools.

Arabian Bemco is committed to providing the best services and establishing strong relationship with its clients by the delivering exceptional quality work while delivering on time each project.

“ ARABIAN BEMCO is committed to providing the best services and establishing strong relationship with its clients by delivering exceptional quality work while delivering on time each project.



Over the last 40 years, Arabian Bemco has developed strategic Joint Ventures and Partnerships to enhance its capabilities and remain competitive in the market. Each company is a profit center and provides highly competitive and quality services. Some of these key affiliates are Truba Arabia, specialized in heavy Mechanical Erection works for Utility Boilers, large Steam & Gas Turbines, Petrochemical, Cement and Refinery Complexes.

Gedac, forefront in the Middle East since 1978 manufacturing and assembling electrical switchgears and control panels in the medium and low voltage range.

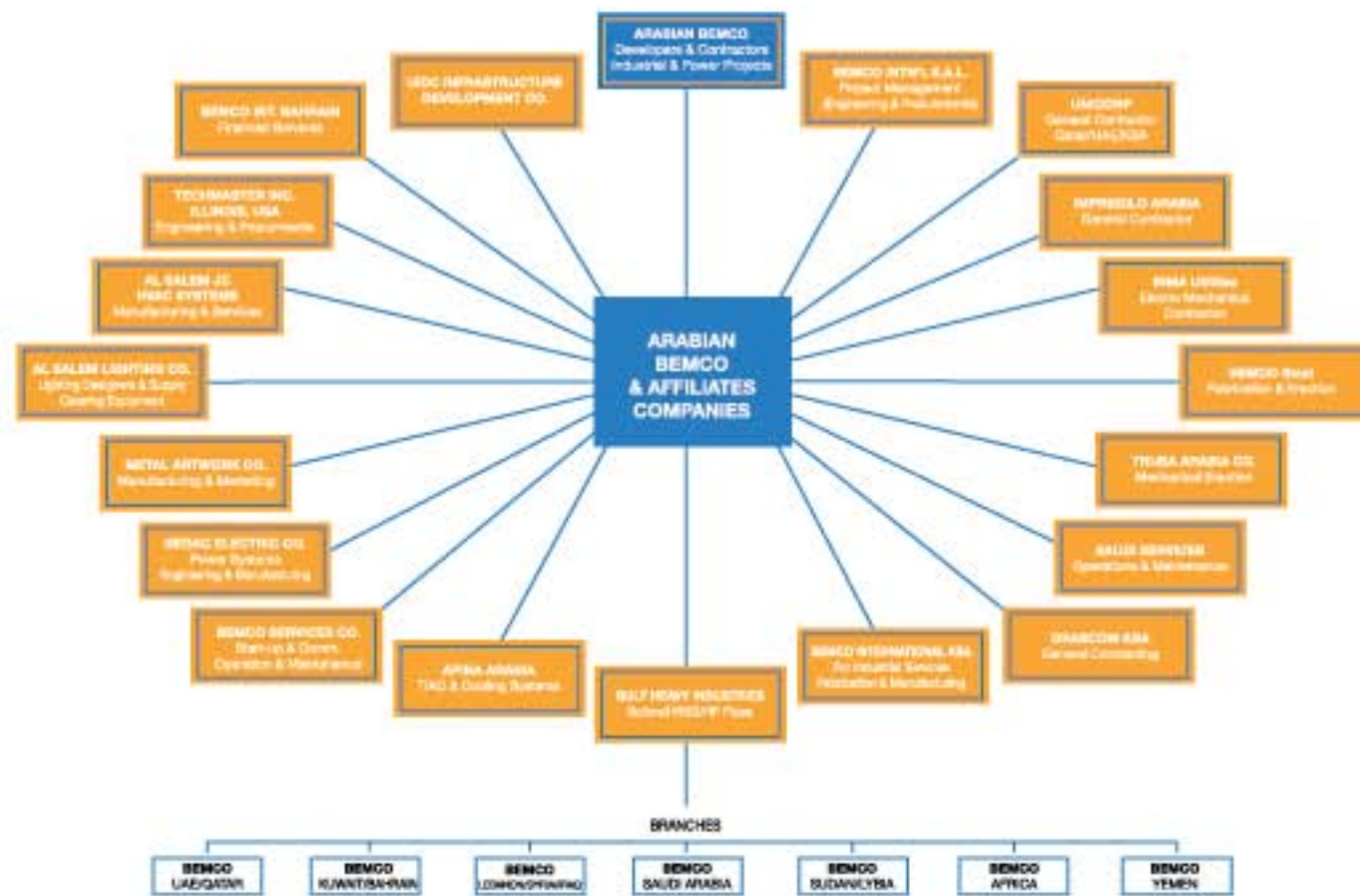
Bemco Steel Industries (BSI), specialized in manufacturing of structural and sheet steel, pre-fab pipes, skids ducts, vessels and tanks.

Bemco International for Industries (BII), specialized in spooling, high pressure pipe and skid fabrication.

Bemco Services, specialized in Operation, Maintenance, Testing & Commissioning systems for Power, Industrial and Building Services.

Impregilo Arabia, specialized in Engineering and Construction of infrastructure, high rise buildings, and marine works.

Inma, specialized in the Electro-Mechanical works for residential, commercial and industrial projects.



ARABIAN BEMCO AFFILIATES COMPANIES

4,600 MW



PP9 Riyadh, KSA

Arabian Bemco's experience and know-how in the power sector is unrivaled for its efficient and timely delivery of Projects.

Arabian Bemco has participated in the implementation of numerous, large and prestigious Power Projects, ranging from Simple Cycle to Combined Cycle Technology. Bemco has undertaken on an EPC basis more than 24,000 MW of Power Generation Projects in the Kingdom of Saudi Arabia and in the Gulf Region.

The Riyadh (KSA) Power Plant No.10 Combined Cycle (PP10) project is a typical example of Bemco's prowess in the Power Generation sector; the project with a generation capacity of 4,600MW, was built on an area of 5 million m2.

In the Transmission and distribution sector, Arabian Bemco has executed over 30 High voltage substations on EPC Basis up to 400 KV with 10,000 MVA Transformer capacity using Gas Insulated Switchgear (GIS) and Air Insulated Switchgear (AIS) technologies.

The scope of such projects has covered turnkey Engineering, Procurement, Erection, Testing and Commissioning including Civil Works.

Arabian Bemco was recently awarded the 380 KV GIS PP12 substation, which shall be completed in December 2013. Previously, Arabian Bemco had executed the strategic 400 KV Substation in Aqaba, Jordan, which forms the first part of the station link interconnecting Egypt, Jordan, Syria, Iraq and Turkey as well as the Substation for the New Doha International Airport.



PP10 by night, Riyadh, KSA



COMBINED CYCLE
POWER PLANTS

SIMPLE CYCLE
COMBUSTION TURBINE
POWER PLANTS

CONVENTIONALS TEAM
POWER PLANTS

4,600 MW

Qurayyah Plant, one of the world's largest combined cycle plants is located in the Eastern Province of the Kingdom of Saudi Arabia. This project is a flagship project for Arabian Bemco and was awarded in September 2009 on a turnkey basis.

The conversion to a combined cycle power plant was initially based on five blocks, each block comprising of three GTG, three HRSGs, and one STG along with all the related Balance of plant equipment including water treatment systems: MSF desalination plant, demineralization plant, and chlorination plant. The result was a net power output of approximately 3,190 MW with an expected rating for each of the STGs of approximately 260 MW.

Furthermore, in December 2010, Arabian Bemco was awarded an expansion contract for an additional three GTG, three HRSGs and one STG subsequently increasing the total plant output to 3900 MW.

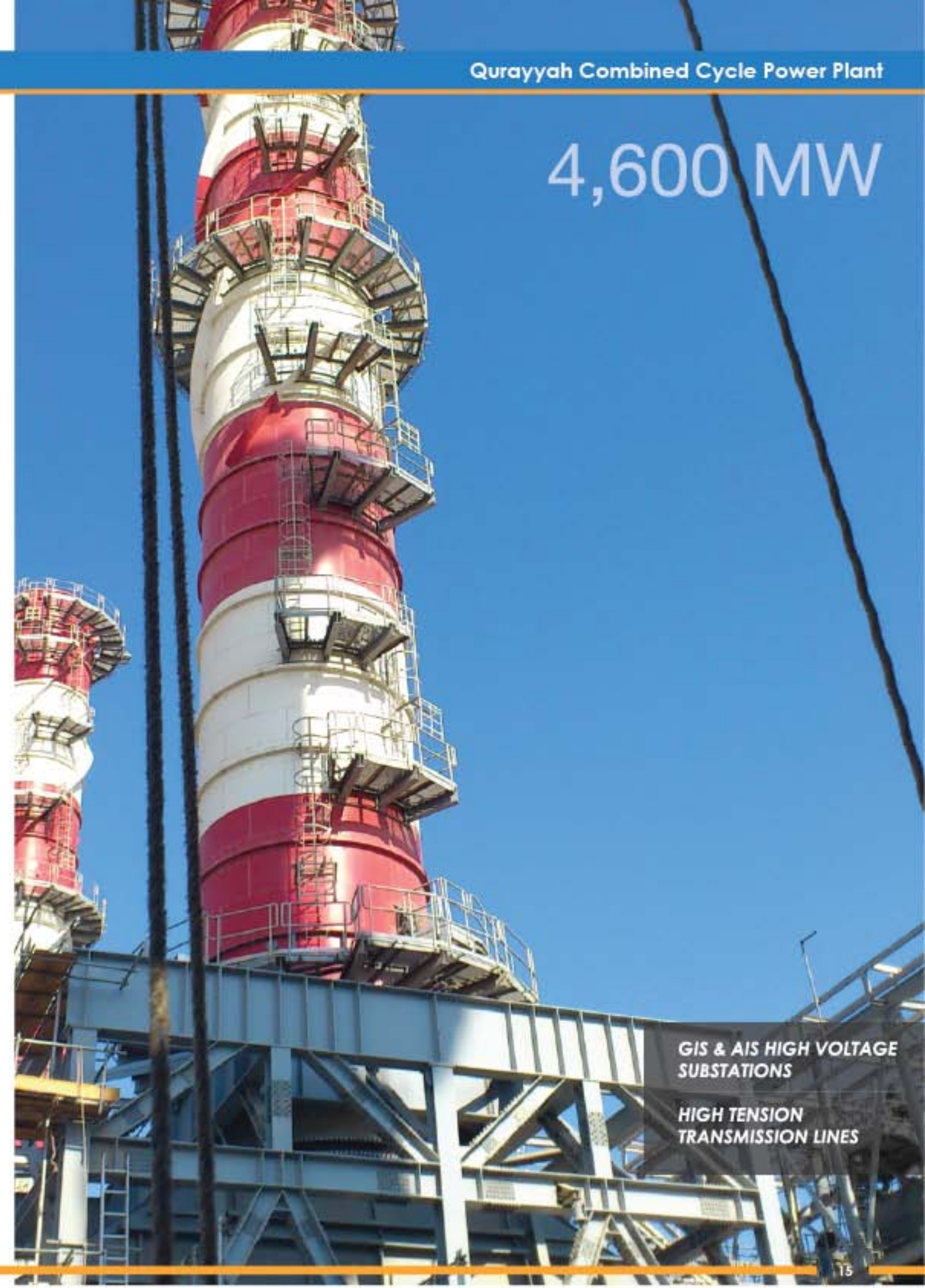


Qurayyah combined cycle HRSG 1 view



Overall look at Qurayyah Power Plant

“ Over 24,000MW of Installed Power Generation.



GIS & AIS HIGH VOLTAGE SUBSTATIONS

HIGH TENSION TRANSMISSION LINES

Arabian Bemco executed on EPC basis a large number of Oil & Gas projects related to pumping, transferring, metering and storage of hydrocarbon products totaling over 100 Million Gallons of Hydrocarbon Storage Facilities.

Arabian Bemco is a General Contractor for construction works in Hydrocarbon Process Plants undertaking responsibility for civil, electrical, mechanical, erection, instrumentation, controls, piping, insulation and painting.

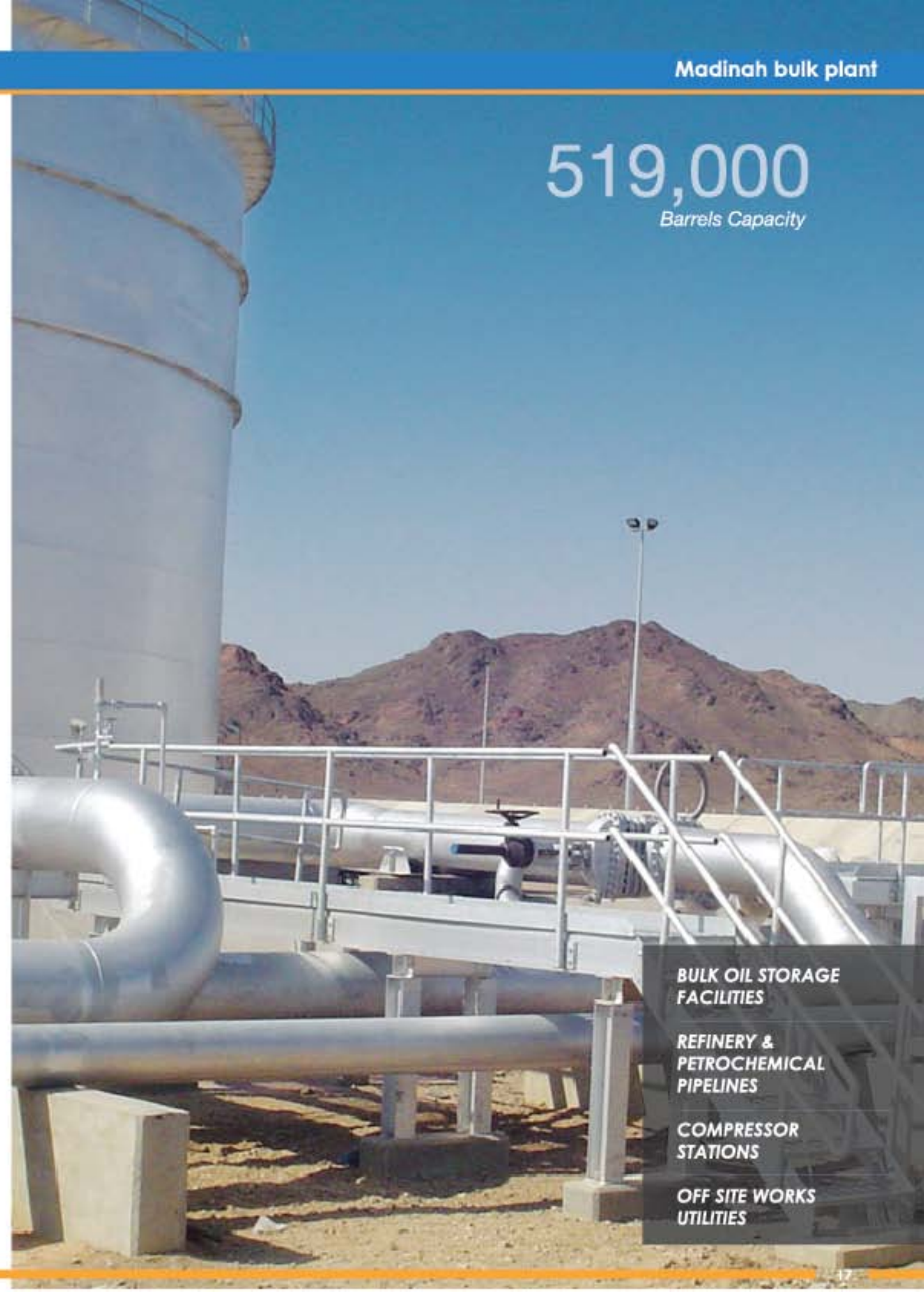
Among the Oil & Gas projects executed are the tank farms in PP10, the 519,000 Barrels Madinah Bulk Storage Facility, the PP9 2,000,000 BPDD crude oil pipeline that ties into the East-West Saudi Aramco 48 inch pipeline and a Flare Tank Project for Luberef.



PP10 Tank Farm

“ Over 100 Million Gallons of Hydrocarbon Storage Facilities Installed.

519,000
Barrels Capacity



BULK OIL STORAGE FACILITIES

REFINERY & PETROCHEMICAL PIPELINES

COMPRESSOR STATIONS

OFF SITE WORKS UTILITIES

Arabian Bemco executed on EPC basis a large number of central refrigeration and district cooling plants using technologies from centrifugal reciprocating and screw compression technologies to absorption technologies for applications in HVAC, district cooling and Gas Turbines Inlet air Cooling (TIAC) facilities for Power Plants.

Among the refrigeration technology projects executed by Bemco is KAAU CUP#2 (Over 18,000 TR), KAAU CUP#2 Extension (Over 4,400 TR), Makkah and Madinah Haram (Over 35,000 TR), the Qatar District Cooling Plant #1 & 2 (Over 65,000 TR) and Gas Turbines Inlet air Cooling (TIAC) Plants in Jouba Hail Power Plants (Over 10,000 TR) and PP9 (over 50,000 TR).



Electrical Room, Qatar Cool



Qatar Cool West Bay, Doha



37,000
Tons of Refrigeration Capacity

LARGE CHILLER PLANTS
DISTRICT COOLING
TURBINE INLET AIR
COOLING (TIAC)

“ Over 450,000 tons of refrigeration.

Arabian Bemco executed on EPC basis numerous water treatment plants using Reverse Osmosis technologies for seawater and brackish water desalination as well as industrial and domestic waste water treatment plants. In addition, Bemco has undertaken large water pumping and transfer stations.

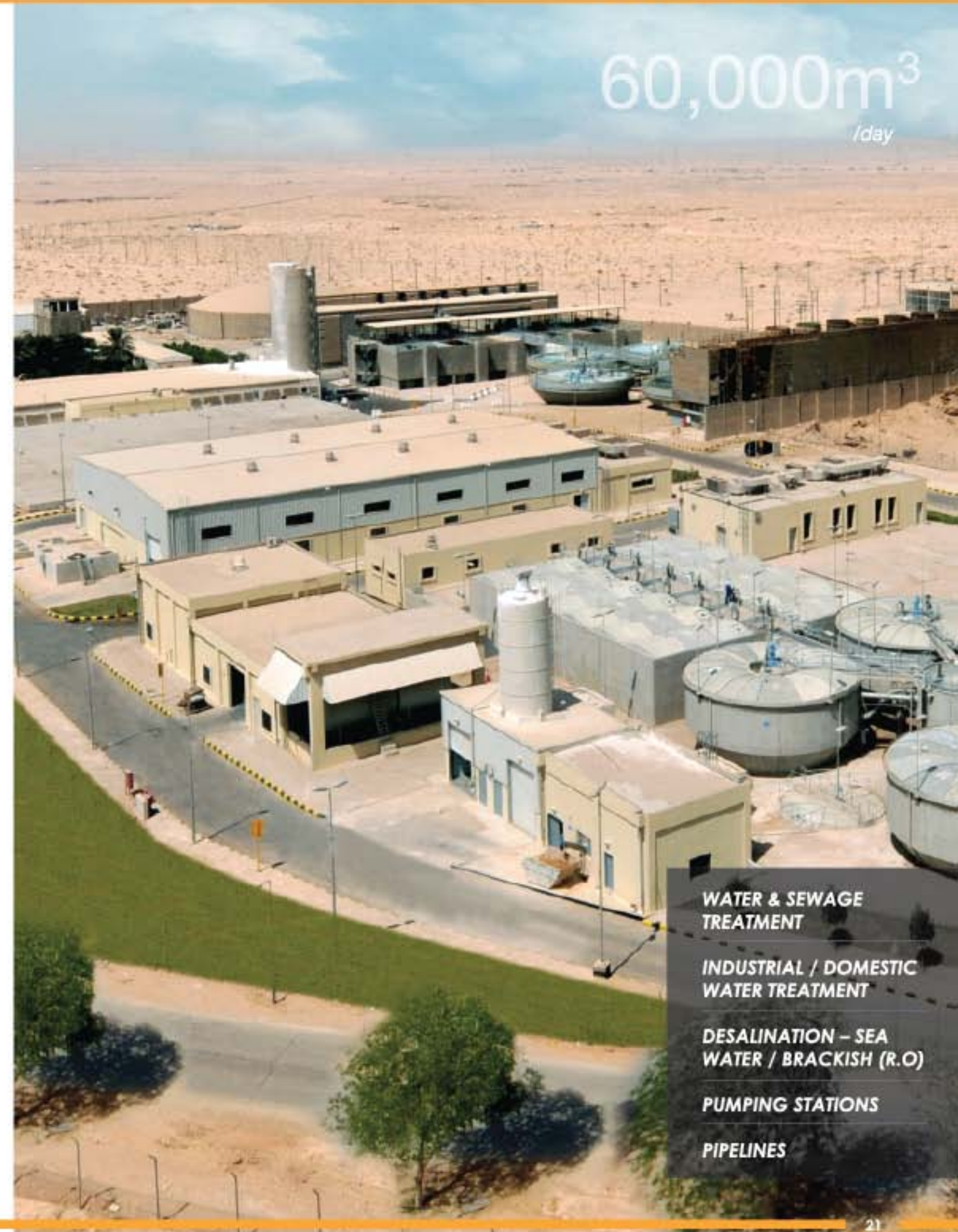
Among Arabian Bemco's list of projects are New Doha Int'l Airport Domestic Waste Water Treatment Plant (17,000 m³/day), Boweib Water Treatment Plant (60,000 m³/day), Saiboukh Water Treatment Plant (60,000 m³/day), Royal Commission sea water intake pumping stations (180,000 m³/day), King Khaled International Airport Waste Water Sewage Treatment Plant (10,000 m³/day).



Water Treatment Plant at Qurayyah Power Plant



Electro-Chlorination Plant, Qurayyah



60,000m³
/day

- WATER & SEWAGE TREATMENT
- INDUSTRIAL / DOMESTIC WATER TREATMENT
- DESALINATION – SEA WATER / BRACKISH (R.O)
- PUMPING STATIONS
- PIPELINES

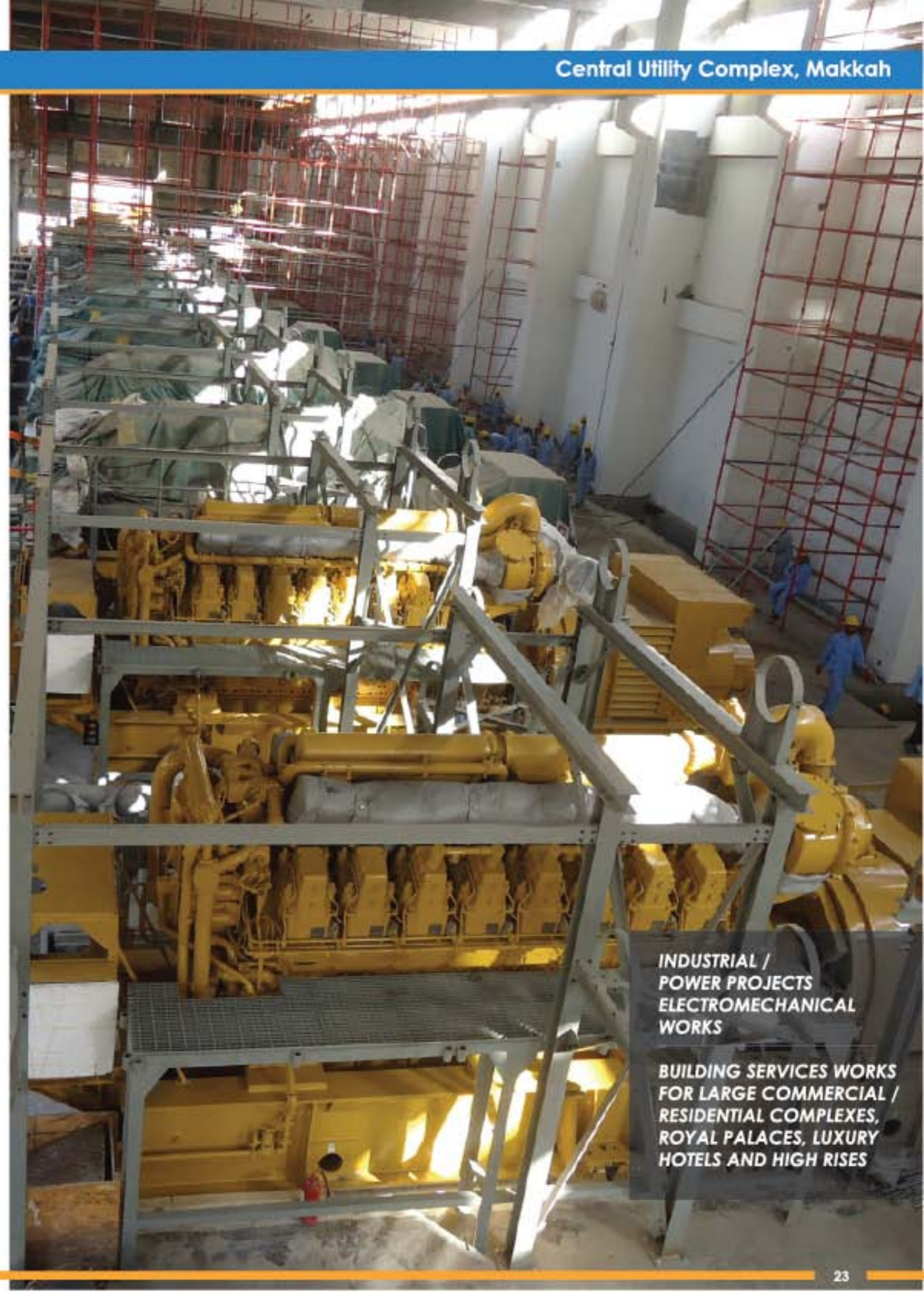
Arabian Bemco has more than 30 years of experience in the Design, Supply, Installation, Testing and Commissioning of Mechanical, Electrical, and low current systems. Arabian Bemco has undertaken a large number of complex projects on "design and build" basis and executed on a rush schedule to the full satisfaction of the Clients.

Among these projects executed are the prestigious projects at the Makkah and Madinah Holy Haram, the Four Seasons Hotel in Amman-Jordan, the Conference Center Palace in Riyadh and 300 villas in Hafr Al-Baten.

- Under its affiliate INMA, BEMCO is currently executing the Makkah Haram Shamiyah Expansion.
- Central Utility Complex
 - King Abdulaziz International Airport
 - Jeddah Kingdom Tower in Obhur
 - Load Centers (Central Utility Plants)



Central Utility Complex, Makkah Saudi Arabia



INDUSTRIAL /
POWER PROJECTS
ELECTROMECHANICAL
WORKS

BUILDING SERVICES WORKS
FOR LARGE COMMERCIAL /
RESIDENTIAL COMPLEXES,
ROYAL PALACES, LUXURY
HOTELS AND HIGH RISES

Civil Projects

To meet the needs of the market, Arabian Bemco's Civil Business Unit was drastically upgraded. This team executes not only Civil Works for Bemco's turnkey projects in the Power & Industrial Sector related to large Power Plants, Oil & Gas Facilities, Refrigeration, Water Projects but also acts as its own profit center in bidding and executing large infrastructure projects.

In this regard, Arabian Bemco has worked closely with leading Saudi Arabian Contractors and has completed large complexes as a general contractor for projects such as Housing and Commercial Buildings.

COMMERCIAL AND RESIDENTIAL

- HIGH RISE BUILDINGS
- INDUSTRIAL BUILDINGS

INDUSTRIAL

- POWER PLANTS
- INDUSTRIAL PLANTS



Maarib Power Plant, Yemen

“ Civil and General Contractor for Residential, Commercial and Industrial Projects.

Pump house, Qurayyah Power Plant

37,000m³
of Concrete



LARGE FLEET OF HEAVY CONSTRUCTION EQUIPMENT

IN HOUSE DESIGN CAPABILITIES

HIGHLY QUALIFIED MANAGEMENT TEAM

225 MW

Arabian Bemco's firm financial statements and capabilities resulted in offering and implementing in several of its projects long-term Project Structured Financing as well as deferred payment options with tenures between 5-10 years. As the power sector continues to evolve, Bemco will continue to pioneer this concept at the forefront of the movement.

In addition, Arabian Bemco has initiated several concepts for the implementation of Independent Power Projects (IPP) in the Kingdom of Saudi Arabia and the Region. In this process, Bemco has worked with International Developers in the integration of the project development and has acquired strong knowhow for the structuring and execution of such projects.

“ Strong Financial and Development Capabilities

- DEVELOPMENT
- TENDER DOCUMENTS AND BID PREPARATION
- QUANTIFICATION / OPTIMIZATION AND PRICING
- BID SUBMISSION
- NEGOCIATION
- PROJECT AWARD
- ENGINEERING AND PROCUREMENT
- CONSTRUCTION AND PAC
- START-UP, COMMISSIONING AND FAC
- PROJECT HANDOVER

PROJECT EVOLUTION



Arabian Bemco has evolved to become a world class Power, Industrial and Civil Contractor with capabilities to Develop, Engineer, Procure, Construct, Test, Start-up and Commission Projects on a turnkey basis.

Bemco's vast resources permit the implementation and hand-over of large and complex projects in record time. These vast resources of Manpower, Plant & Equipment, and Fabrication facilities in construction, coupled with its single point responsibility Project Management approach ensures customer satisfaction and success in the execution of its projects.

Some of its resources are listed below :

- Large resources with over 18,000 direct employees, extensive fleet of construction equipment, vehicles and facilities, quick and swift mobilization.
- Over 2,200 Engineers in all disciplines including Civil, Electrical, mechanical, Instrumentation and Control.
- Highly qualified Engineering and Design group comprising over 400 Engineers, Designers and CAD Operators.
- Highly qualified technicians for specialized work; such as welding, high voltage cabling, others.
- Global procurement capabilities
- Large fabrication workshop with state of the art Equipment.
- Competitive pricing with international bidding standards
- Testing & Commissioning Services and O&M

In addition, we have developed a state of the art IT infrastructure to manage and track the progress of our projects. We take pride in using state of the art ERP software such as J.D. Edwards and Primavera.

“ Centralized database across its various offices and sites ensure fast communication and immediate action.

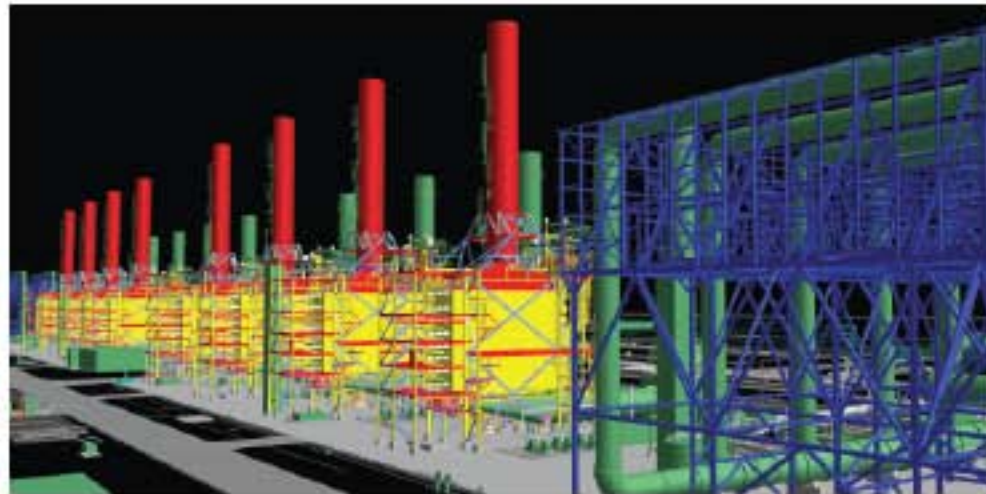


Engineering

Engineering and Procurement Groups work closely with each other to ensure timely sourcing of major and long-lead equipment and to comply with the technical and customer requirements and specifications.

Quality and Value Engineering in Turnkey EPC Industrial and Power projects are the essence of success. Arabian Bemco's Professional group of engineers, designers and draftsmen provide a complete design, from the conceptual designs at the proposal stage of a project, to the detailed construction and as-built drawings at the construction stage. The group utilizes computer aided design (CAD) systems for all its two and three dimensional designs, as well as state of the art engineering software for piping, electrical and structural designs and calculations.

The Group is supported by its offices in Lebanon, Egypt, India, and USA.



3D Model of PP10 Combined Cycle Plant

“ Quality and Value Engineering
in Turnkey
EPC Industrial and Power
projects are the essence of
SUCCESS.

Procurement

Procurement for all projects is carried out in compliance with strict company policies and ISO certified procedures.

The Procurement Business Process is stream-lined into the following basic phases, to ensure quality and timely delivery of materials to site.

- ENSURING SPECIFICATION COMPLIANCE
- EXPEDITING MATERIAL PRODUCTION AND DELIVERY
- ACHIEVING QUALITY REQUIREMENT, QUALITY AND FACTORY ACCEPTANCE TESTS
- TRACKING SHIPMENTS AND SITE DELIVERY

VENDOR SELECTION

To achieve a successful procurement performance, Bemco utilizes J.D. Edwards and ERP systems, to map and maintain a record of all procurement data at all stages of the Business Process yielding detailed reports on each phase and subsequently providing proper procurement management and control.



HRSG module being lifted

Construction and Project Management

Arabian Bemco's Project Management objective is to identify, monitor and correct any deviations from the original project scope of work. Arabian Bemco's main primary focus is always on quality, schedule and cost. To achieve these objectives, the following functions are monitored during project execution:

Planning and Scheduling

Planning is performed to establish the execution plan as well as define the:

- | | |
|---------------------------------------------------------------------------------------------------------------------------------------------------------------------------------------------------------------------------------|--------------------------------------------------------------------------------------------------------------------------------------------------------------------------------------------------------------------------------------------|
| <ul style="list-style-type: none"> • Scope of work • Assumptions and risks • Execution strategy • Specific contract requirements • Engineering design • Procurement | <ul style="list-style-type: none"> • Assignments • Work break down • Resources • Construction requirements • Inspection and test requirements • Tooling and equipment supplies |
|---------------------------------------------------------------------------------------------------------------------------------------------------------------------------------------------------------------------------------|--------------------------------------------------------------------------------------------------------------------------------------------------------------------------------------------------------------------------------------------|



Quality & Safety Control

Designed to ensure that all quality and safety requirements are implemented throughout all stages of the project.

Cash Flow Control

Designed to monitor the status of Billing and Collection during any stage of a project execution.

Budget/Cost Control

Designed to check expenses on a project as they are incurred. It is intended to keep track of each cost element or cost center, to identify reasons for cost variance against budget throughout the various stages of project.

Contract Administration

Designed to secure legal and contractual rights of the company in an efficient and timely manner. This function is to be carried out jointly by the Project Manager and Contract Administration Section.

Fabrication

Today's demanding construction market requires that qualified and successful contractors develop extensive in house fabrication of various mechanical, structural and electrical components for its turnkey projects.

Arabian Bemco owns several large, modern and automated fabrication workshops to deliver and erect high quality products on an expedited and continuous basis. These workshops are located in Jeddah and Riyadh and consists of over 500,000 sq.m. of fabrication floor space with resources, equipment and over 2,600 highly qualified technicians, engineers and management personnel. These facilities have basic and detailed engineering capabilities and are ASME certified for pressure vessels and spool fabrication.

- PRESSURE TANKS AND VESSELS
 - PIPE AND ELECTRICAL STEEL SUPPORTS
 - PIPE FABRICATION AND WELDING 2" DIAMETER AND ABOVE
 - PLATFORMS, LADDERS AND STAIRS
 - PUMPS AND COMPRESSOR SKIDS COMPLETE WITH PIPING, TUBING AND ELECTRICAL
 - STEEL STRUCTURES
 - PIPE SPOOL
- PARTIAL LIST OF FABRICATION**



Exhaust stack fabrication and assembly line



Steel Structure & Piping facility, Riyadh

Start-up , Testing and Commissioning

Over the last 40 years, Arabian Bemco established its own Start-up & Commissioning, Operation & Maintenance service group (Bemco Services Co.) to support its main EPC business. This Group is a formidable team of professional engineers and technicians specialized in Maintaining, Operating, Testing and Commissioning of Electrical and Mechanical systems for Industrial, Power and Commercial Projects. To complement this well trained team, Arabian Bemco has assembled a large inventory of precision instruments and tools for the testing, commissioning and start-up of the projects.

Highest Quality In Erection & Construction constitutes an essential part of a successful turnkey project. Arabian Bemco's competences are demonstrated by the successful completion of major industrial, power, electromechanical & civil projects.

The significant resources and years of experience in Engineering, Procurement, Construction, Mechanical Erection, Electrical and Instrumentation activities, along with a fully owned large, modern and highly efficient fabrication workshop and fleet of construction equipment enables Arabian Bemco to erect, construct and commission the highest quality projects.

- HI-POT TESTING OF CABLES
- MV CIRCUIT BRAKERS
- LV, MV AND HV SWITCHGEARS
- CHILLED WATER PLANTS
- PROTECTION AND INTERTIP RELAYS
- AHU's AND FCU's
- Pilots DIFFERENTIAL PROTECTION
- CCMS
- DISTANCE RELAYS
- VARIABLE FREQUENCIES DRIVERS
- POWER TRANSFORMERS
- PLC & DDC CONTROLLED SYSTEMS

PARTIAL LIST OF SYSTEM
TESTING AND COMMISSIONING
CAPABILITIES



Steam Turbine, Qurayyah Power Plant

Arabian Bemco strives on being the Most Competitive, Best Performing & Highest Quality Company.

REFRIGERATION PROJECTS

West West Bay District Cooling Plant II (30,000 Tons) - Qatar
New Doha International Airport (NDIA) Chiller Plant (30,000 Tons) - Qatar
Turbine Inlet Air Cooling System for Block C at PP9 (for 10 GTG Units)
West Bay District Cooling – Qatar, Refrigeration Capacity of 30,000 Tons
King Fahd International Airport (I&M) Capacity of 15,000 Tons
King Abdul Aziz International Airport Jeddah, Replacement of evaporator and condenser Vessels
Two chiller plants, and two ice Tanks
Ajyad Central Chiller Plant, Capacity 60,000 Tons central
Prophet Mosque Extension Chiller Plant, Capacity 21,000 Tons

WATER PROJECTS

Boweib Water Treatment Plants (60,000 m3/day)
Salboukh Water Treatment Plants (60,000 m3/day)
Seawater Pump House Upgrade Phase I (60,000 m3/hr)
Seawater Pump House Upgrade Phase II (60,000 m3/hr)

CIVIL PROJECTS

Saudi Arabian National Guard Housing Project - Qassim
Maarib Power Plant Housing Complex - Yemen
School Complex for Royal Commission - Yanbu

Electro mechanical Projects

SABIC's PET Preform Plant - Makkah
New Doha International Airport (NDIA) Utility Systems - Qatar
Al Habfour Grand Hotel - Beirut
Ras Tanura Laboratory ARAMCO - Saudi
300 Villas - Hafr Al Batin
Beirut Government Hospital (500 Bed) - Beirut

POWER GENERATION Projects

Qurayyah Combined Cycle Power Plant 4,600MW
Riyadh Power Plant No. 10 (PP10) Combined Cycle 4,600MW
Construction of Riyadh Combined Cycle Power Plant No. 12, (PP12) 2,175MW
Riyadh Power Plant No. 9 (PP9) Combined Cycle – Blocks A&B 1,800MW
Riyadh Power Plant No. 9 (PP9) – Blocks C&D 1,700MW
Riyadh Power Plant No. 9 (PP9) – Block F 1,000MW
Riyadh Power Plant No. 8 (PP8) – Extension Power Plant 850MW
Riyadh Power Plant No. 9 (PP9) – Block E 680MW
Riyadh Power Plant No. 7 (PP7) – Extension Power Plant 500MW
Aweer Power Plant, Dubai, U.A.E. 490MW
Maarib power Plant, Yemen 490MW
Reinforcement of Qassim Power Plant Extension III 480MW

TRANSMISSION & DISTRIBUTION PROJECTS

Aqaba Substation – Jordan 400/132 KV GIS 480MVA
Taif Substation 380/110 KV GIS 1,000 MVA
Hail Substation 380/132 KV AIS/GIS 800MVA
Abha North Substation 132/33/13.8 KV AIS 386MVA
Sakaka & Al Jouf Reinforcement 132/13.8 KV GIS 240 MVA
Idwa & Kilabiyah Substations 115 KV AIS 80MVA

OIL & Gas projects

ARAMCO's Utility Upgrade at Juaymah Gas Plant
ARAMCO's North West Bulk Plants (Trail, Al Jouf, Tabouk and Duba)
ARAMCO's South West Bulk Plants (Najran, Abha and Jizan)



- | | |
|-----------------------------------------|--------------------------------------------------------|
| ABB - Switzerland | Ishikawajima-Harima Heavy Industries Co. (IHI) - Japan |
| Agra-Moneco - Canada | Kennedy & Donkins - UK |
| Alstom - France | Doosan Heavy Industries - Korea |
| APINA - Spain | Korea Power Engineering Company (KOPEC) - Korea |
| AREVA - France | Lurgi - Germany |
| General Electric - USA | Merz & McLelland - UK |
| Bechtel - USA | Mitsubishi Heavy Industries - Japan |
| Belleli - Italy | Mitsui - Japan |
| Black & Veatch - USA | Mot McDonald - USA |
| CADAGUA - Spain | Nuovo Pignone - Italy |
| CBI - USA | PB Power - UK |
| DURO Felgueraca - Spain | Shaw Group Inc. - USA |
| EFACEC - Portugal | SK Engineering & Construction - Korea |
| Enpropie - France | Siemens - Germany |
| Ewbank Preece - UK | Spie-Batignolles - France |
| Foster Wheeler - Italy | Tecnicas Reunidas (TR) - Spain |
| General Electric - USA | TermoMeccanica - Italy |
| GS Engineering and Construction - Korea | Toshiba - Japan |
| Hitachi - Japan | WATERLEAU - Belgium |
| Hitachi Zosen - Japan | Weir - UK |
| Hyundai Heavy Industries - Korea | YIT - Finland |
| IBC - Spain | |
| Impregilo - Italy | |